




USER GUIDE

Instructions for use



Discover the world of ecological weeding with our

 Weeding machine with Hot water


60, Bl de la Haie des Cognets - 35136 ST JACQUES DE LA LANDE

Tél : 02 99 05 00 33 FAX : 02 99 05 01 94

E-mail : contact@oeliatec.fr - www.oeliatec.com



Dear customers,

You've just received your  Weeding machine[®], which has been carefully checked by ourselves before leaving our workshop.

The lifespan of your Weeding machine and its efficiency will depend on the care you will give to its maintenance throughout its lifetime. We strongly advise that you carefully read this guide and recommend that you study the maintenance guide of the machine and its components.

If you need further assistance, be aware that our **After Sales Department** is at your service on appointment or by telephone at **02 96 99 05 00 33**

Thank you for your trust.

This equipment mounted on chassis must be driven with its **water tank empty** when transferred on public roads.

When used under construction site conditions with a full tank, the speed will be limited to **25 Km/h**.

It must be towed by a vehicle complying with the local legislation.

SUMMARY

- Warranty
- Châssis -> Frame ?
- Safety
- Water Circuit
- Fuel Circuit
- High Pressure Circuit
- Electric Circuit
- Maintenance Recommendation
- Tire Pressure

WARRANTY

Our Weeding Machines are guaranteed for 2 years for parts, and 1 year for labor, once the Machine has been actually delivered to the customer. Travel charges and wearing parts don't fall under the warranty. From an explicit agreement our guarantee is limited to a plain and straight replacement of parts.

Any replacement of parts made under the warranty cannot extend the warranty period.

Our warranty doesn't extend to:

1. Parts that have been disassembled in an unprescribed manner
2. Wearing Parts (Filters, flexible hose, gun, water hose, bell, nozzle)
3. Specific installation made by yourselves.
4. Heater descaling
5. Scaling
6. Defect investigation

Moreover, the warranty is denied when:

- a) Original parts are replaced with counterfeited parts or parts of unknown origin.
- b) Equipment has been modified or transformed without the consent of OELIATEC.
- c) The equipment has been used in a noncompliant way.
- d) The damages are due to carelessness, wrong assembling, an accident, a wrong usage (i.e.-e a lack of anti limescale agent, or lubricant)

Circuits warranty: 2 years for parts, under the condition that a yearly checkup is done by an OELIATEC authorized agent.

® Patented Equipment N°12/01913

® European Patented Equipment N°1656/2859795

The Start

A few Recommendations

Each time before you start: check the load level of the battery, the fuel level of the Heater and the thermal engine. If your machine is equipped with the anti limescale pump, make sure to add one dose of OELIA TH each time you refill the tank. (0,07 Gl for 220 GL water; 30 cl for 1000L water).

****Check if the filters are cleared, and clean them if needed.**

Check the stowing of your equipment with the help of homologated straps if you are putting the machine on a platter. Check the hanging of the trailer on the coupling ball of the towing vehicle. Check the lighting and the pneumatic pressure.

Check that the tools are clipped for the travel, and that the plugs of all tanks are well closed.

Driving

When driving with the water tank full, make sure the towing vehicle complies with the law in force regarding the Gross Combined Weight Rating (avoid sudden moves).

If you are driving with water in the tank, anticipate the braking and drive smoothly, since the balance of the trailer may vary because of the quantity of water inside the tank

Safety

>>It is strictly forbidden to climb on the trailer or the towing vehicle while moving.

IMPORTANT: All the Driver's licenses must comply with the local laws.

Electric reloading of your equipment



Connect your Weeding machine on 220v mains socket with the included wire that is to be fixed on the electric terminal

Depending on the model, expect 4 hours of reloading.

Hardware controlled Automatic Battery Charger

The Automat[®] stays off

Starting the machine/ Use of the machine

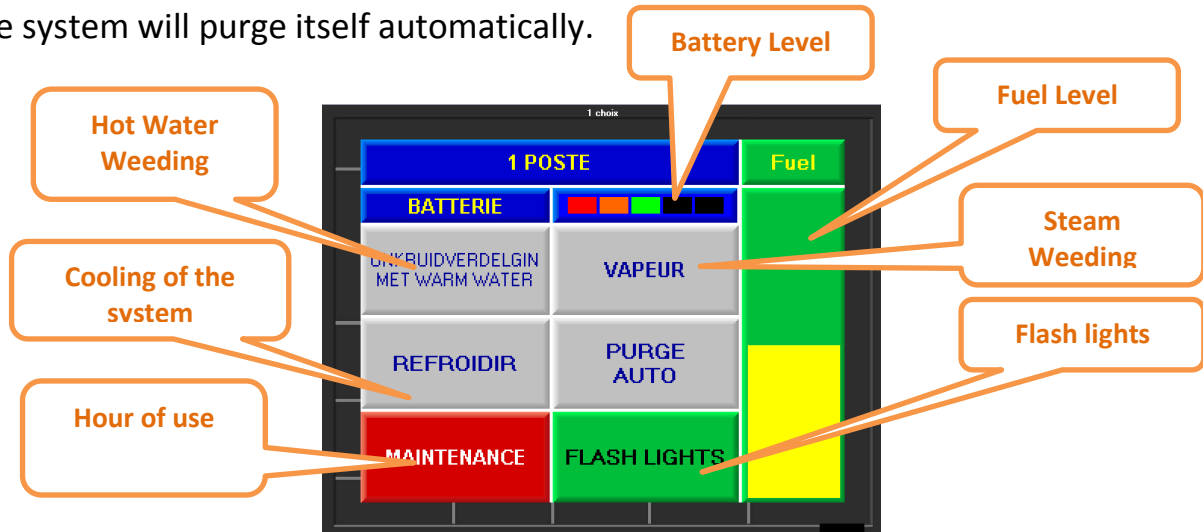
Following the refilling of the water tank:

Weeding Function

*Unwind a sufficient quantity of the High Pressure hoses, used for both High Pressure Cleaning and Hot Water Weeding.

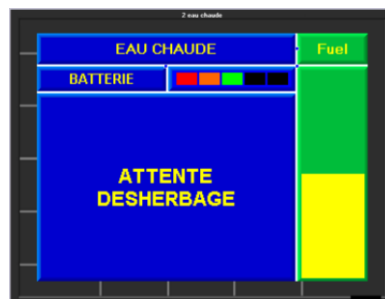
*Switch on the system: **Red big button, make one quarter turn.**

*The system will purge itself automatically.

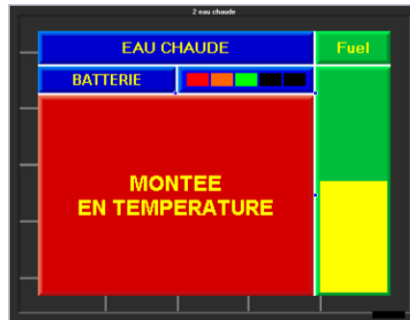


* The AUTOMAT[®] Turn on and boot itself for a few seconds, then select the wanted function:

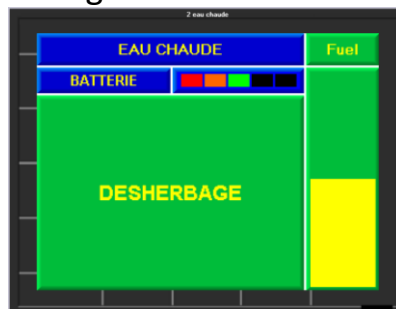
1. Hot Water Weeding (or Steam Weeding)



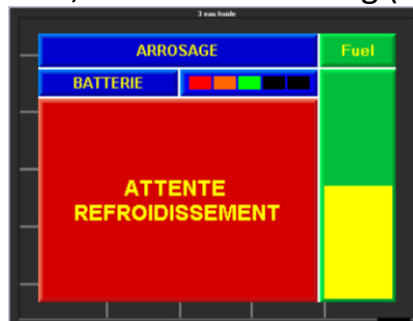
2. Pull the trigger of the water gun to start the heating. The screen will stay red during this phase. (a ring will signal the Heating)



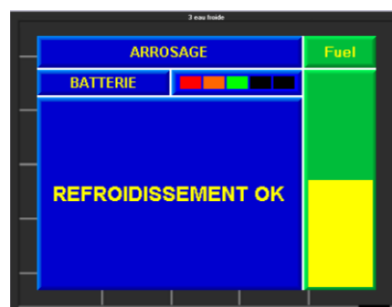
3. Once the ideal temperature is reached, the ringing stops and the screen turns green.



4. After using the Weeding machine, make sure to cool down the circuit before storing your equipment. Press Esc to return to the main menu, then select Cooling ("Refroidir").



5. Wait for the screen to validate that the cooling is completed



*Once the Weeding Machine is turned off, press again on the water gun trigger to release the remaining pressure in the High Pressure circuit.

*The spiral hose (protection) must remain on the ground during the Work.

*Always roll up the High Pressure hose before a travel.

After using it for 5 or 8 hours, it is wise to reload the batteries on 220V with the included electric cable.



1. Weeding Function

The front doors must remain closed **during the Weeding process (24Volts)**. Select the **Weeding Mode on the AUTOMAT**.

2. Spraying Function

To spray water, select the Spraying function of the AUTOMAT, pull the security lock on the reel side to release it. A 20m long transparent hose is at your disposal, and then press the pear. When the work has been completed, roll up the hose and lock the reel with the help of the security lock next to it.



High Pressure Hose Reel and High Pressure Pipe Unclogging

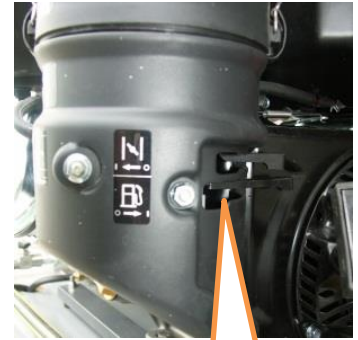
3. High Pressure Washing Open the left door (in the working direction) and lock it with the security lock provided for that purpose, which will switch the start function ON (for the thermal engine).

Version SKID

Both side doors must remain opened when using the High Pressure function.



Automatic HP reel and double jet gun



Gas tap

AUTOMAT[®] (colored screen) : Select the HIGH PRESSURE Washing, and chose the desired temperature (after starting the thermal engine).

Unroll the High Pressure Hose, and keep the Double Jet Gun aiming at the ground.

Start the auxiliary engine (E85 Super Unleaded Gas) located inside at the front of the trailer. (Check the lube oil beforehand)

To begin with, open the gasoline supply valve, pull the starter, and once the engine has coughed decrease the starter, pull the launcher or push the Electric Start Button. Then wait a few seconds before removing the starter.

If the engine doesn't start on the first try after you pulled the launcher, press the trigger of the water gun to release the pressure inside the hose.

The Engine Rpm will determine the flow rate you will obtain.

The Double jet Water Gun has a flow adjusting side grip. In order to adjust the flow, turn the grip till you get the desired flow and pull the trigger. The gun has 2 jets.

**Be careful not to use too much pressure on fragile surfaces.

****Never aim the gun at a person, or electric cables or any source of electricity.**

The front door will remain open while executing the task. As soon as it is closed, the thermal engine will shut down. (Wait at least 5 min before completely shutting the door).

>>At the end of the task, it is strongly recommended to close the gasoline supply valve.

3.1 High Pressure Pipe Unclogging mode

Same procedure as the High Pressure Washing previously cited:

BEFOREHANDS, before starting the engine, release the pressure, remove the gun and put the **SNAKE**.



Start the engine; select the desired temperature with the AUTOMAT (same function as the HP washing), the flow will depend on the engine Rpm.

If you need a great quantity of water you can plug the trailer to the water network with the fitting located next to the license plate. Don't forget to open the tank water supply valve.



Weeding Hose Reel and the Thermospherical Bell

Clean the filter of the pump entrance regularly.

Unscrew the filter, and wash the grid with clear water.

Put the grid back and screw the cover plate.

Make sure the circuit is purged to release the air. In no case must the hoses vibrate.
The temperature must remain stable.



3.2 Washing station

Equipment: Shampoo gun, rotation spray nozzle, brush, cleaning pad ...



« BREHAT »

The specificity of this machine lies in the fact that it is coupled to the lifting frame of your tractor and powered by its 540 rpm power grip.

Beforehand, make sure the lifting capacity of the frame is sufficient enough and that ***the balance when fully loaded is not altered.***

Once the machine is coupled, avoid sudden moves and anticipate the sweeping effect at the back of the tractor when maneuvering.

Check if the back lighting of the tractor is still visible once the machine is coupled; otherwise add an approved lighting pad at the back of the chassis.

The electric supply is powered by the 12-volt plug. Your tractor must be equipped with a 12 volts plug- with a minimum of 6 squares.

While in use:

- Weeding, stay at a slow pace for the tractor, between 850 and 1000 rpm
- High pressure washing: tractor's engine at the right engine rpm (power grip at 540 rpm).

For all our products, if you need assistance or more information, you can call our office, a technician will help you: 02 99 05 00 33 (during opening hours from Monday 8.30 am through Friday 430 pm)

Laws/Regulation

1 – 1 Regulation conditions and maintenance

This Heater is labeled with the European Community certificate, in conformity with the European directives

2006/42/CE – 97/23/CE

We are not responsible for damages resulting from unauthorized staff's intervention.

Any modifications or maintenance of the machine must be accomplished by a qualified technician in accordance with the laws in force and the rules in art.

1 - 2 Ventilating

The Weeding machine is permanently ventilated.

Make sure the electric cooling fan of the machine room is working well, and that the air intake is not clogged.

Check if the cooling fan of the heater is working well, and if the grid is not clogged, in order to allow a proper venting and evacuation of the heater's exhausts.

1-3 Protection against the freezing



Use OELIA vegetal -35°C antifreeze protection (recommended)

Before the weather temperature drops below zero, or if it is freezing outside, put the Weeding Machine in frost protection. Empty all the water still in the tank, the filters, the pump and the heater.

Let the filters, valve, spear grip, the pump input and output open. For more efficiency, let some air under high pressure in the whole circuit.

**You can use an antifrost specifically made by  following the recommendation of the manufacturer or let an approved technician do the operation as part of the Maintenance contract which is available (on demand).





1 – 4 Set up



« HOUAT » can be put on a trailer or a loading platform. Before each use, it is recommended to check that the equipment is well locked, and that the identification plaque is in accordance with the law.

1-5 Security instruction

A) Training

Read carefully the instructions in this manual. Get use to the proper functioning of your machine and its controls before using it. Learn how to quickly shut the engine down.

Make a proper use of your weeding machine, i.e.-e use it only for weed control. Any other use may result in damages for the machine and be dangerous.

Never allow children or people without training to use the weeding machine.

Do not use the weeding machine when:

- People, especially children, or animals, are in its vicinity.
- The user has taken drugs or products that could alter his vigilance and reflex.
- Keep in mind that the user is responsible for the accidents and risks involved with a third party or its belongings.

B) Caution

Always wear waterproof security shoes with long trousers during the weeding process.

We recommend that:

- You use adequate gloves to avoid burnings
- You wear a suit with reflector stripes on the traffic lanes, so that the drivers see you clearly
- You fill the gas tank outside exclusively. Do not smoke when filling the tank or whenever you manipulate gasoline.

Pneumatic pressure

Tire Dimensions 185 x 14 c = 3.8 bars (Houat)

165 R 13 C = 4 bars (Belle Ile)

.....

BE CAREFUL

Your Weeding machine [®] is now programmed to work in the best way.

Before each refilling of the water tank, put one dose of **OELIA TH anti limescale**

Check the cleanness of your filters as often as possible (at least once per week).

Clean the water circuit once per month.

Put 2 liters of OELIA DT in the tank, with the circuit closed and let the product travel throughout the circuit for 10 min. Then, wash it with clear water.




A good quality gasoline, filtered and free from water, will avoid setbacks.

Extended shutdown period: It is strongly advised to achieve a full loading of the batteries at least once per month.

The given advices in this manual are of general order and don't necessarily apply to all the models we manufacture.

Of course, you can ask our services on specific matters, such as the water circuits, the electric equipment, who can be modified if optional equipment are added.

To truly appreciate your [®] Weeding machine efficiency and make the most of it, a deepened knowledge of it is necessary.

Do not bring any modification without the written approval of the manufacturer, otherwise the conformity certificate would be broken, denying OELIATEC all responsibilities for what would happen afterwards.

We hope these indications will allow you to work smoothly.